

OCTOBER TOUR

th

TOUR **12** HISTORIC SITES

from 1799-1934

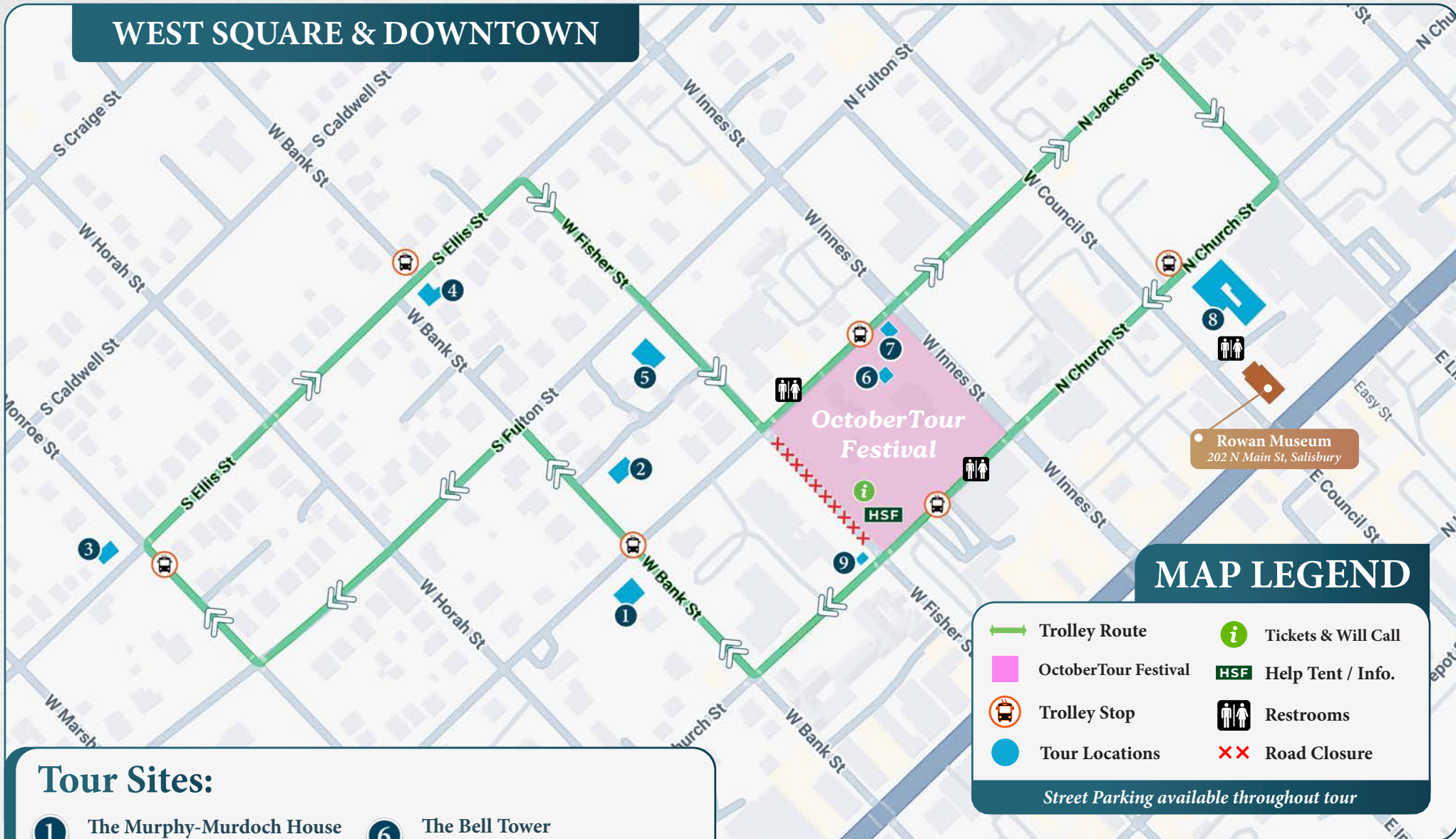
OCTOBER 11 - 12, 2025

BELL TOWER GREEN • PLEIN AIR ARTISTS

PATRONS' PARTY & PATRONS' PORCH

ANTIQUÉ FIRE TRUCK RIDES • LIVE MUSIC & MORE!

WEST SQUARE & DOWNTOWN



MAP LEGEND

- Trolley Route
- OctoberTour Festival
- Trolley Stop
- Tour Locations
- Tickets & Will Call
- Help Tent / Info.
- Restrooms
- Road Closure

Street Parking available throughout tour

Tour Sites:

- | | |
|---|--|
| 1 The Murphy-Murdoch House
229 W. Bank Street • c. 1854 | 6 The Bell Tower
295 W. Innes Street • c. 1892 |
| 2 The Dr. Josephus Hall House
226 S. Jackson Street • c. 1820 | 7 The Presbyterian Session House
295 W. Innes Street • c. 1855 |
| 3 The Harry Pfaff House
501 W. Monroe Street • c. 1922 | 8 St. Luke's Episcopal Church
131 W. Council Street • c. 1828 |
| 4 The Charles Torrence House
428 W. Bank Street • c. 1839 | 9 The Henderson Law Office
200 S. Church Street • c. 1820 |
| 5 The Fletcher Smith House
201 S. Fulton Street • c. 1905 | |

Off-Map Tour Sites:



10 General John Steele House
1010 Richard Street • c. 1799



11 Eastover Estate • c. 1934
Park at 4809 S. Main Street
Shuttle Service Required



12 The Jacob C. Clapp House
104 N. Park Drive • c. 1930

BELL TOWER GREEN PARK

120 S. Church St. Salisbury, NC 28144



MAP LEGEND

	Tickets & Will Call		Vendors		Restrooms
	Help Tent / Info.		Food Trucks		Antique Fire Truck Rides
	Live Music / Stage		Trolley Stop		Road Closure

Join us during OctoberTour weekend at the Bell Tower Green - Free to the Public!

Saturday, October 11th, 10am - 5pm
Sunday, October 12th, 12pm - 5pm

This year, as a part of our 50th annual home tour, we are expanding the celebration into the Bell Tower Green! There will be local artisans, food trucks, live music and more, right in the middle of all the action. Join us on **Saturday, October 11**, and **Sunday, October 12**, in the spirit of community and preservation to enjoy the many festivities of OctoberTour Festival both days during OctoberTour tour hours.

OCTOBERTOUR WEEKEND

Saturday, October 11th 10am - 5pm
Sunday, October 12th 12pm - 5pm

All sites open during tour hours. Please visit the properties in the order of your choosing.

Ticket Booth

Located at the entrance of the park under the garden trellis - the hub for all the information you might need for OctoberTour! Questions, lost and found, will-call and more.

4:30pm Last Tour: Please be in line by 4:30pm for the last tour of the day.

Trolley

Courtesy trolleys are available for Tour ticket holders. The trolley route and stops can be found on the map on pages 2-3. Get on and off at any stop and see properties in any order.

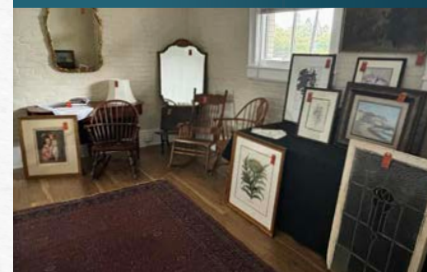
Photography

Photographs are not permitted inside private homes. You are welcome to take photos of home exteriors.

Restroom Facilities

Restrooms will be located at the OctoberTour Festival at Bell Tower Green, St. Luke's tour site and Rowan Museum.

OctoberTour Store



All year long, we have been compiling beautiful antiques, artwork, furniture and more to offer for sale at our OctoberTour Store! You'll be able to shop the OctoberTour Store early by visiting our offices at 215 Depot Street. Alongside one-of-a-kind antiques, you can purchase books, architectural drawings, Christmas ornaments and other retail items. This is a sale you do not want to miss!

OctoberTour Store Hours: October 6-9th | 9am-Noon
215 Depot Street, and during the OctoberTour Festival at the Bell Tower Green.



Interested in History?

The **Rowan Museum**, a non-profit preserving Rowan County's history from its earliest inhabitants to the present, will be open during **OctoberTour hours**.

202 N Main St, Salisbury, (Next to St. Luke's #8 Tour Site)

Free admission • Donations appreciated

Refer to the map on pages 2-3 for shuttle routes, stops, and restroom facilities

TRADITION: OCTOBERTOUR

SINCE
1972

50 Years and Counting...



As we approach the **50th Annual OctoberTour** this year, we are reminded of how important traditions are. Traditions with our family and friends, surrounding holidays and annual events—these occasions lend themselves to creating a lifetime of memories. For many of you, *OctoberTour is a tradition*. You may have been at the very first one in 1975, or joined us sometime along the way. This year, we have the opportunity to celebrate

a milestone - fifty years of historic home tours. If you have never been before, this could be your first year to join us for our favorite annual tradition.

In **October 1975**, Historic Salisbury Foundation opened ten properties to the public for our first historic home tour. People walked through West Square, visiting century-old houses, picking up a sack lunch at the Salisbury Female Academy, and stopping on the Hambley-Wallace grounds to purchase art. Over time, the event expanded from one day to two, and **Bank Street Festival** was created. Bank Street and the **Hall House** lawn has long hosted vendors and exhibits, silent auctions and live music. For decades, tour-goers have been able to ride antique fire trucks through the historic district thanks to Brown's Antique Equipment. And while so much has changed, our annual tradition and the reason we put it together year after year, remains the same.

We truly love OctoberTour, and we are so grateful it helps to fund our mission to **preserve and protect the historic fabric of Salisbury and Rowan County** all year round. This year, we are delighted to open four of the original properties to you again, along with several other special historic buildings, and one that has never been on tour before. The Bank Street Festival becomes **OctoberTour Festival**, as this year it will be located in Bell Tower Green. Sit on the lawn and enjoy live music, shop the vendors, pick up an antique or two at our **OctoberTour Store** (back for its second year!), and enjoy a bite from local food trucks.

We are grateful for OctoberTour to be an annual tradition for so many of you. And if you have never been before, this is a year you won't want to miss! *Come join us for this milestone event.*



Volunteer Chair
Tripp Clement

House Manager
Co-Chairs
Joan Beard
Taylor Ritchie

Sponsorship Chair
Noel Adams

OctoberTour Festival
Co-Chairs
Mattie Emerine
CJ Peters

Patrons' Party Co-Chairs
Laurel Harry
Weston Ewart

Patrons' Porch Chair
Barb Sorel

OctoberTour Store Chair
Betty Mickle

Flower Chair
Monique Owens

Photography
Tim Coffey Photography

HSF Staff

Kimberly Stieg
Executive Director

Weston Ewart
Events Coordinator

Rachel Fink
Revolving Fund Project
& Office Manager

Charlie Franco
Marketing Coordinator

Taft Prentice
Property Maintenance



We would like to extend a special thanks to the many volunteers, docents, artists, musicians, vendors and more who make OctoberTour possible. Your participation is invaluable.



Welcome OctoberTour Friends,

On behalf of the Historic Salisbury Foundation and the OctoberTour Committee, we are so glad you will be joining us for our 50th annual OctoberTour! The citizens of Salisbury and Rowan County welcome you with open arms.

The tour features homes from the very first tour fifty years ago to one that has never been included before. From 1799 to 1934, the properties span across three centuries with different architectural and design styles. We hope you won't miss this opportunity to visit other significant local landmarks, as we open the Bell Tower, Session House, Henderson Law Office, and St. Luke's Episcopal Church as a part of this milestone tour.

This year, make sure to visit the Bell Tower Green where our typical "Bank Street Festival" has been moved to become OctoberTour festival. Enjoy food, shopping, live music and more in the heart of beloved city.

It's going to be a unique weekend and we are so glad that you're here to experience our celebration of the 50th annual OctoberTour! Enjoy!

Tripp Clement
Volunteer Chair 2025

Board of Trustees

Edward Norvell, *President* • Barb Sorel, *Vice President*
Tim Proper, *Treasurer* • Lina Drinkard, *Secretary* • Anne Lyles
Noel Adams • Josh Barnhardt • Sara Clymer • Ben Fisher
Barbara Corriher • Lee Cowan • Dylan Ellerbee • Danny Jensen
Cecelia Hughes • Shirley McLaughlin • Emily Perry

A NOTE FROM OUR *FOUNDER*

Wow! This house tour has been going on for fifty years.

Thinking back to a meeting in 1975, Historic Salisbury Foundation board said something like this, “if Charleston can have a house tour, why not Salisbury?” They hoped a tour would promote Salisbury as a major historic place and the proceeds from the tour would help save historic houses. So this tour was born.

The day of the first tour was “perfect October.” Bright. Crisp. Not a cloud to interfere with a vivid blue backdrop for the houses. In reality, the day was made perfect by being able to go inside important historic houses that you had admired from the outside.

The first house tour was a walking tour mainly along Fulton, Ellis, Fisher and Bank Streets. It was a resounding success! Crowds lined the entries and sidewalks.

Now again, we have the rare opportunity to see, and absorb, all the history of another important collection of Salisbury and Rowan houses - dating across the spectrum of generations, from Early America to the Great Depression and displaying an interesting variety of architectural styles.

As I have done each year, and on behalf of many, I am pleased and honored to extend to you a “historic” welcome to attend, and celebrate, Salisbury’s 50th Anniversary OctoberTour.

My Best,

Edward Clement

Edward Clement
Founder



A NOTE FROM OUR *EXECUTIVE DIRECTOR*

Happy OctoberTour Weekend!

On behalf of Historic Salisbury Foundation, I want to share my heartfelt gratitude for being part of the 50th anniversary of OctoberTour. For fifty years, this beloved tradition has opened the doors of Salisbury’s historic homes, allowing us to celebrate the craftsmanship, stories, and beauty that define our community.

This milestone year would not have been possible without you — our tour-goers, whose enthusiasm keeps history alive, our generous sponsors, whose support makes every detail possible, and of course, hundreds of amazing volunteers. Your presence and commitment ensure that Salisbury’s architectural treasures will be preserved and cherished for generations to come.

As we reflect on five decades of OctoberTour, we are filled with gratitude for all who have walked alongside us in this journey. Thank you for celebrating with us and helping to honor the past while supporting our mission to save more historic buildings.

In the Spirit of Community,

Kimberly Stieg

Kimberly Stieg
Executive Director





**CENTRAL
PIEDMONT**
BUILDERS INC.

General Contractor



**Central Piedmont Builders:
We Specialize in Historic Renovations.**

**We look forward to meeting you and learning
more about how we can help build your future.**

(704) 638-2076

www.cpbuilder.com

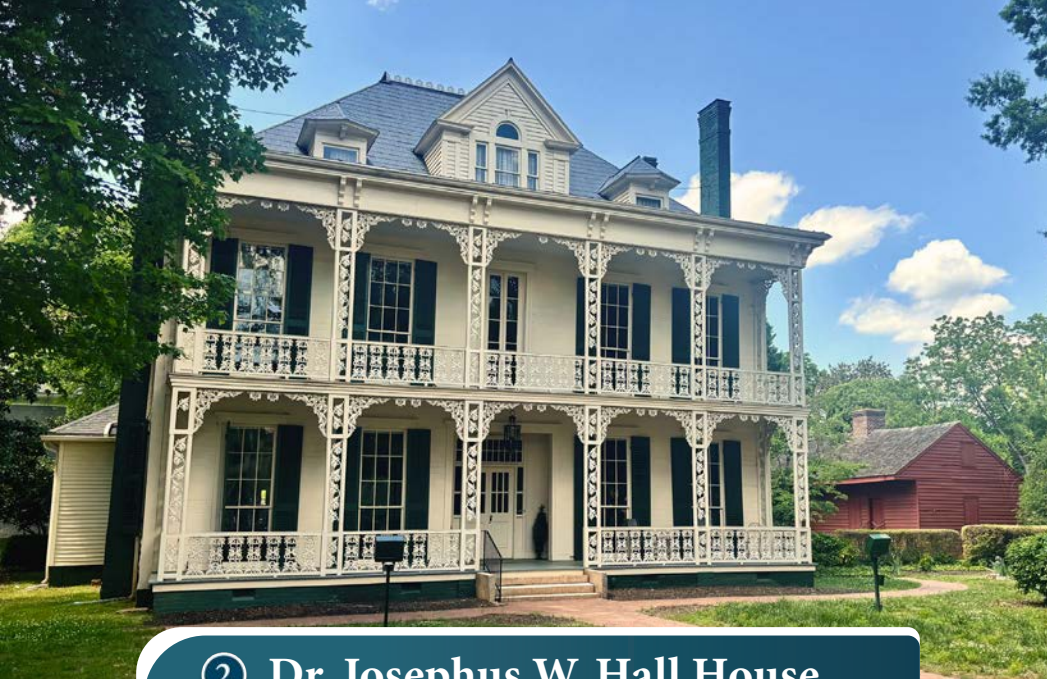


① The Murphy-Murdoch House
229 W. Bank Street, Salisbury

c.1854

Built circa 1854 by wealthy merchant Andrew Murphy, this handsome two-story Greek Revival home features two generous verandas with Doric columns, providing an inviting sheltered view of the historic surroundings. The home was passed down through family members for five generations until 2014. Walter “Pete” Murphy, a well-known legislator who served 19 sessions in the state House of Representatives passed the property down to his son, Spencer Murphy, editor of the Salisbury Post of 28 years. The home was then passed to his daughter, Mary Marshal Murphy Murdoch who in turn passed it on to her daughter, Katherine-Murdoch Clement. The structure underwent a multi-year restoration beginning in 2015. The newest owners have transformed the space into their own, adding the impressive fountain on the west side and reuniting the back lot with the property to extend the backyard.

Original features include double entry doors with beveled glass and surrounds, six fireplaces with original mantels, glass transoms, an original spandrel, wide-planked heart pine floors downstairs and several rooms with wooden walls and bead board ceilings.



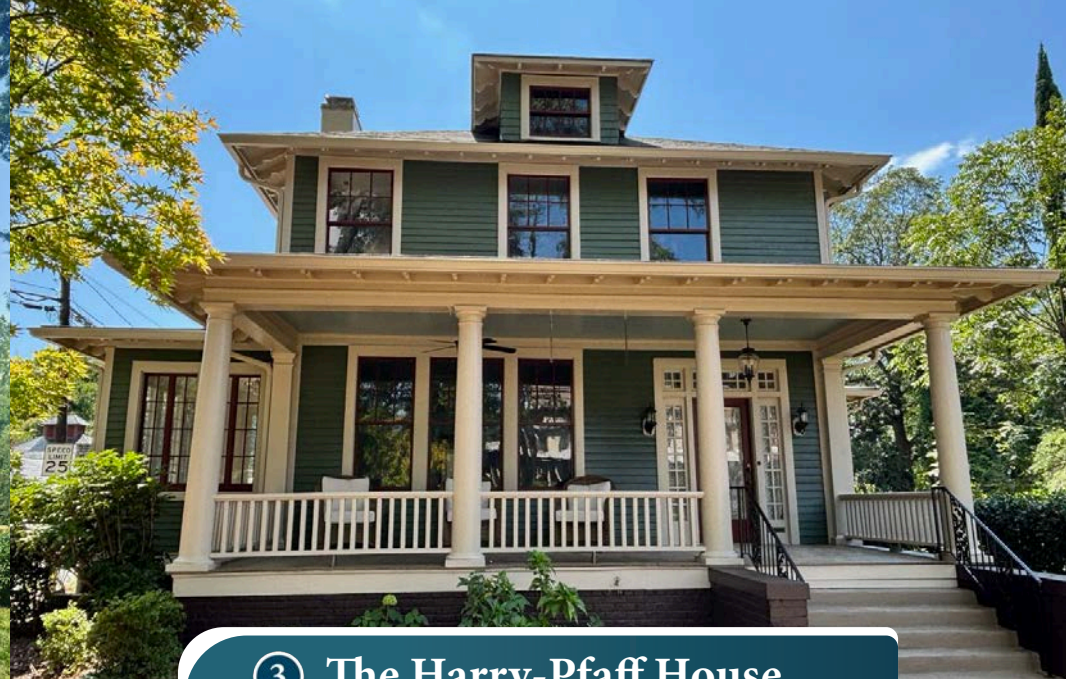
② **Dr. Josephus W. Hall House**
226 S. Jackson Street, Salisbury

c.1820

Salisbury's landmark property is an 1820 two-story Federal style double-pile frame home originally constructed for the Salisbury Female Academy. It was converted into a residence in 1825 by Rebecca Nesbit Troy, who lived there with her half brother, Maxwell Chambers. In 1859, Dr. Josephus W. Hall (1805-1873) acquired the home and began to transform it – adding a two-story front porch with cast iron oak leaf and acorn ornamental openwork, a gateway arch, and square-edged clapboard. The front windows were also lengthened. Between 1890 and 1910, the attic was enlarged with a high-hipped roof and dormers.

Historic Salisbury Foundation purchased the home in 1972 from the Hall family, who had continuously occupied the residence for 113 years. The descendants donated many of the home's original contents to the Foundation. Today, you can experience the original furnishings, wallpapers, painted ceilings, and more. A two-room detached kitchen, staffed before emancipation by enslaved persons, was carefully restored over a three-year period and opened to the public in 2006. Last year, the Foundation worked to return the paint throughout the home to the 1859 colors and expose oak floors in the south parlor and dining room.

The Hall House is also open on Saturdays March-December from 1-4pm.



③ **The Harry-Pfaff House**
501 W. Monroe Street, Salisbury

c.1922

Designed by Louis H. Asbury, North Carolina's first professional architect, for S.W. and Annie Harry, this 1922 Colonial-Craftsman features original hardwoods, mantels, tile fireplace surrounds, colonnade, quarter-sawn birch staircase, and tin lower roofs. S.W. Harry was a prominent businessman in Salisbury – he and his brother partnered with the Belk Brothers to open Belk-Harry on South Main Street at the turn of the 20th century.

The home remained in the same family from the time of its construction until 1989 after the Harry's only daughter, Doris Pfaff, and her husband, Dr. James Pfaff, had both passed away. It was donated to Historic Salisbury Foundation at that time and is a part of the Foundation's Revolving Fund. The current owners purchased the property in January to restore it after it had been abandoned for several years. Despite the condition of the home just last year, most original features are completely intact. This is the first time the house has ever been on OctoberTour.



Meet the Hamby family, F&M Bank mortgage clients in their dream home.

HOMETOWN MORTGAGES FOR HEARTFELT MOMENTS

Big banks and algorithms don't know your street. We do.
Our mortgage team lives here, works here and truly cares.
That means real conversations, thoughtful guidance and a loan
that fits your life—not just your credit score.



Pam Abernathy

Senior Mortgage Banking Officer / Vice President

704.762.2268 | pabernathy@fmbnc.com

NMLS #729655



fmbnc.com

NMLS #712307
Member FDIC

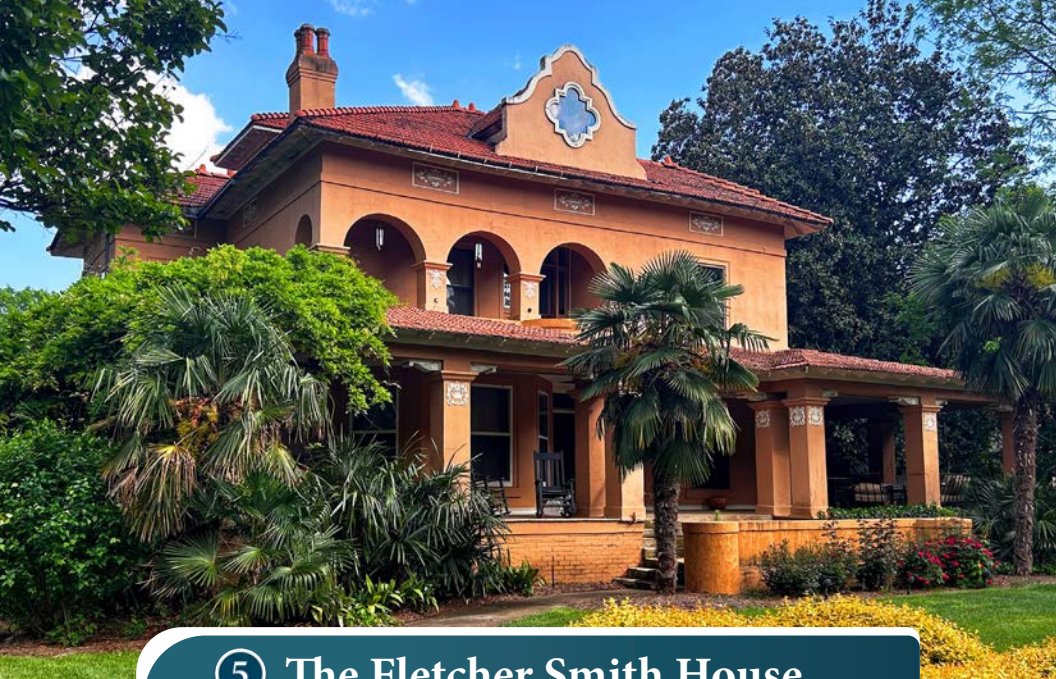
Let's get you home!
Scan the QR code to apply
for a mortgage today.



④ The Charles Torrence House 428 W. Bank Street, Salisbury

c.1839

One of the oldest homes in the historic West Square District, this simple but stately brick home was built by Charles L. Torrence for his first wife. Torrence, a lawyer, was one of several notable individuals to live in the home. The original structure is a fine example of Greek Revival architecture built with handmade brick and in a symmetrical design. In 1899, the house was remodeled and the owner made several changes including adding Italianate brackets around the roof, as well as Doric columns dividing the house into five bays. The back ell addition was constructed between 1913 and 1922, and the carriage house was added sometime between 1931 and 1950, according to Sanborn maps. Greek Revival moldings are intact throughout the interior of the home. The families of several well-known Salisburyans including J. F. Hurley, Douglas Collins, Keith Prevette, and Malcolm Blankenship have lived in this house over the last century.

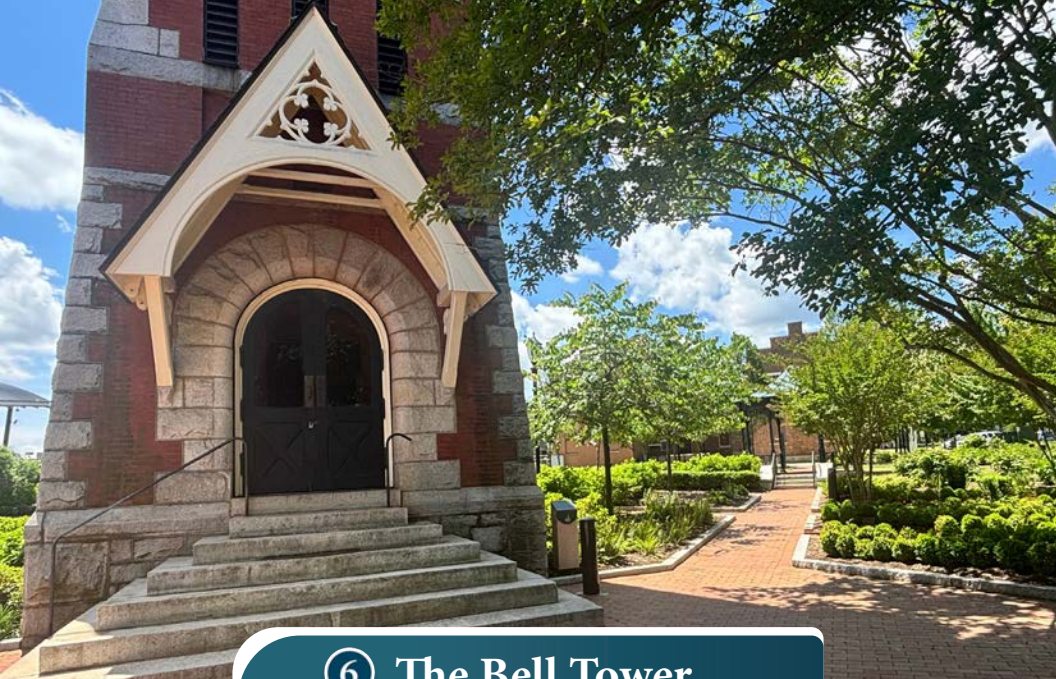


⑤ **The Fletcher Smith House**
201 S. Fulton Street, Salisbury

c.1905

This unique Spanish Mission style house, one of only a few in Salisbury, was built in 1905 for Colonel and Mrs. Franklin Fletcher Smith. With its red tiled hip roof and deep veranda, this house and the smaller one next door, built for Smith's son as a wedding present, add interest to the more traditional South Fulton Street neighborhood. Long divided into multiple apartments, the house was returned to its single-family status in 1977.

The Fletcher Smith House is two and a half stories with stucco over frame construction. It has a complex hip roof with eyebrow dormers and shaped gables. A sweeping veranda welcomes visitors. The interior features decorative moldings, original oak floors with inlays, eight fireplaces including a sculpted marble mantel, stained woodwork and so much more. The current owners have extensively updated the house, which they purchased in 2013. The most recent update being the installation of bead board porch ceilings, as the original porch ceilings had been removed.



⑥ **The Bell Tower**
295 W. Innes Street, Salisbury

c.1892

The Romanesque style Bell Tower was built in 1892 as a part of First Presbyterian Church designed by Charles Webber of Philadelphia. The two structures that were connected on the south side of the tower cost \$23,000 to build, which was paid off at the dedication in 1893. In the early 1970s, the church was demolished and the bell tower was soon condemned. Historic Salisbury Foundation and other community members advocated to save the structure. The fate of the bell tower was one of the key reasons Historic Salisbury Foundation formed. The Foundation, alongside the bank who owned the tower at the time, paid for repairs needed after it suffered from a lightning strike, as well as water and insect damage. The tower underwent a more extensive restoration by contractor Alfred C. Wilson & Co. in 2016-2017.

The tower features a patterned slate roof, elaborate conical-roofed bartizans at each corner, fleurs-de-lis ornamentation, a bracketed entrance with granite quoins, arched doors and the original bell cast in 1858. Church members disagreed on what materials to use for the buildings, with some wanting pressed brick from Baltimore and others advocating for native granite. The compromise: both materials would be used in an interlacing design. At over 100 feet tall, the tower is an icon and focal point in downtown.

CATAWBA
COLLEGE

EST.
1851

CELEBRATING 100 YEARS
IN SALISBURY

2300 W Innes St, Salisbury, NC 28144

catawba.edu

For **A** sale

AreyRealty.com

704-633-5334



WALLACE
— REALTY —

*Supporting Historic Salisbury Foundation and
Salisbury, North Carolina since 1870*



⑦ **The Presbyterian Session House**
295 W. Innes Street, Salisbury

c.1855

At the time of Maxwell Chambers' death in 1855, a trust was created that would hold numerous properties for the use of the First Presbyterian Church or to produce income for the church. The session house was built that year over Chambers' grave, as well as nine other graves of his family members in order to protect them. It has been continuously owned by the Maxwell Chambers Trust and First Presbyterian Church since its construction. The trust originally owned the entire block where the Bell Tower Green is now located. In 2014, Superior Court Judge Mark E. Klass modified the trust to allow for the sale of the remainder of the block; however, the Session house must remain in the trusts' possession. The brick building on a stone foundation is Greek Revival in style with a hipped roof and high ceilings. The session house served as a meeting or lecture space for many decades and was restored in 1998.



⑧ **St. Luke's Episcopal Church**
131 W. Council Street, Salisbury

c.1828

St. Luke's Parish was established by act of Colonial Assembly in 1753, but it was not until 75 years later that the small congregation had a permanent home. This 1828 church building, the oldest ecclesiastical structure in Salisbury, was expanded in 1883 with the addition of an apse containing three stained-glass windows – the earliest extant examples of this craft in Salisbury. The entire collection of windows represents some of the finest examples of American stained-glass artistry of their time. The tower, baptistery and east end of the nave were added in 1909 and designed by Frank P. Milburn, the noted architect responsible for Salisbury's 1908 Railway Passenger Station. Soon after, the Parish's 19th century iron bell was relocated to the tower and in 1968 a peal of four bronze bells was installed. As part of the Parish's 250th anniversary in 2003, the faux stone treatment in the apse, believed to be original to 1883, was uncovered and restored.



⑨ **The Henderson Law Office**
200 S. Church Street, Salisbury

c.1820

Commonly mistaken as the place where Andrew Jackson studied law, the Henderson Law Office is special in its own right. While Andrew Jackson studied next door in the Macay Law Office that was located between this building and the original well for Salisbury, this structure came later. The land for the office was purchased by Archibald Henderson in 1796 from Spruce Macay. The bricks used in the foundation were inscribed with the date 1819, and it is believed the office was finished in 1820. Henderson was a lawyer who held several public offices during his lifetime, including serving in the House of Representatives. Judge Nathaniel Boyden, Henderson's son-in-law, later inherited the property, including a house next door. He also used the building as his office. It has since served as a school, the county's first public library (1911), headquarters for the Red Cross during WWI, an office for the local Boy Scouts, and then Historic Salisbury Foundation's first office. It is owned by the Rowan County Public Library.



Support · Security · Cloud · Strategy · Hardware

Adding value to our local communities for over 20 years!

Walser Technology Group Inc.



Godley's
GARDEN
CENTER
& NURSERY, INC.

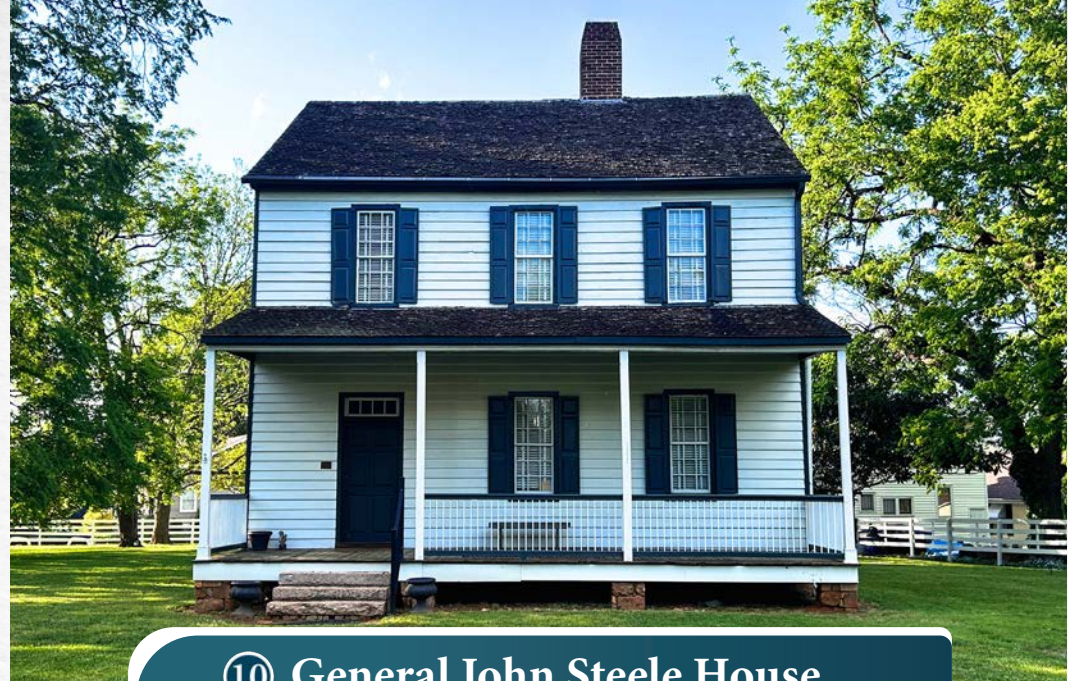
WYMBS LAW

To book a free consultation, please call

704-754-4840

BROWN

ANTIQUE EQUIPMENT



⑩ General John Steele House

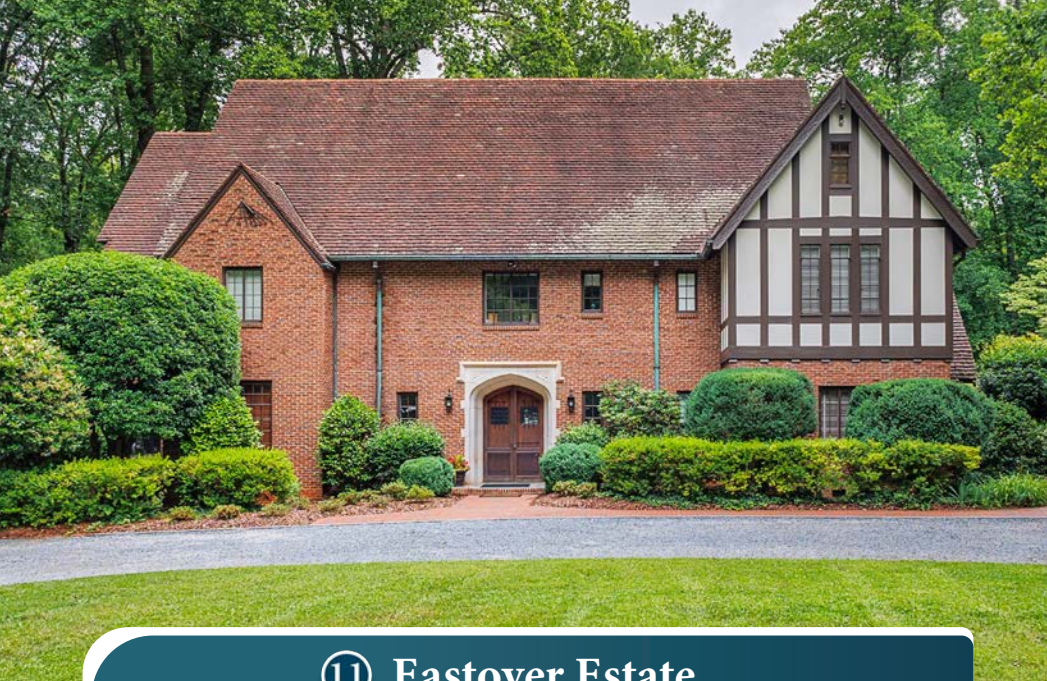
1010 Richard Street, Salisbury • Street Parking

c.1799

The home was located on the highest point of the 866-acre plantation known as Lombardy, home of General John Steele (1765-1815). It is one of a few early plantation houses in North Carolina that has survived within the heart of a modern city. The exterior of this two-story side-hall plan frame house was built in the Federal style by Elam Sharpe from March through July of 1799. The interior work was not complete until March of 1800, when Steele contracted with a Philadelphia carpenter, John Langdon, to finish the impressive Adam-style interior.

Steele was one of the most prominent politicians from Rowan County, serving as town commissioner and later elected to the North Carolina House of Commons and the US House of Representatives. He was also appointed by George Washington as Comptroller of the U.S. Treasury. After he resigned during Jefferson's presidency, he turned his focus to the plantation and stables, while also serving in other political offices.

The house underwent substantial expansions including additions that nearly doubled the size of the structure and inappropriate porches, pebbledash and a portico. In 1976, the current owners began a nine-year restoration that meticulously brought the structure back to its original design through extensive research of historic documentation including photographs, letters, contracts, and receipts.



⑪ Eastover Estate

Park at 4809 S. Main Street • Shuttle Service Required

c.1934

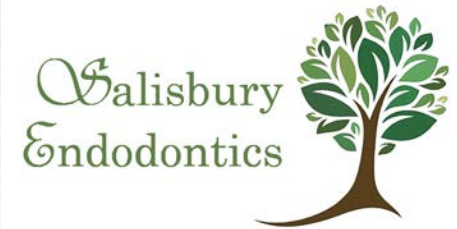
Eastover, designed in 1934 by Charlotte architect Louis H. Asbury for Hearne Swink, is one of the few examples of Tudor style country house architecture in Rowan County. The house sits on 26 acres and features a cast stone Tudor arch entrance and half-timbered gables with carved verge boards. The windows are irregularly placed, their varying size in keeping with the informal character of the country house design of the period.

As one enters the home through the oak front doors, they will find Crab Orchard stone gracing the front entry and a walnut handrail featuring hand-forged wrought iron spindles along the staircase. The first-floor library features raised hard-rock maple paneling throughout and has a bay window overlooking the gardens and patio area.

After purchasing the home in 1979, the Wilsons decorated with family pieces, and antiques from the William Doyle Family Gallery Auction in New York City.



Luxury Historic Living
Restored Commercial Space
Downtown Convenience



Providing specialty root canal in
 Rowan County since 1994

704-637-3636

www.salisburyendodontics.com





Carrol Fisher
Construction Co.

614 N. MAIN

633-6124

SALISBURY

Committed to the impressive progress of Rowan County, Fisher Realty Co. can help you solve your housing problem. Homes, acreage, office buildings, apartments, subdivisions, building & leasing industrial buildings, and property management are all part of this firm's business. They are the builders, developers, and owners of "Forest Village," an attractive, well-planned complex of apartments, duplexes, and townhouses conveniently located and featuring a swimming pool and recreational facilities.

- DEVELOPERS OF WESTWINDS
- SINGLE & MULTI-UNIT RENTALS

Comfortable Living In A Unique Community!!

Community Builders Since 1957



CARROL FISHER



⑫ The Jacob C. Clapp House 104 N. Park Drive, Salisbury

c.1930

Catawba College relocated to Salisbury in 1925, departing Newton, NC, the place of the College's founding in 1851. Once established in Salisbury, Dr. Elmer R. Hoke led the development of the new campus, and in May 1930, the Board of Trustees authorized the purchase of a lot on the north side of the campus which would soon become a Tudor-style residence for the college's president designed by the brother-in-law of Dr. Hoke. Throughout the years, presidents and their spouses have hosted game nights, "musicales", parties, receptions and more. Additionally, students have occasionally lived on the third floor of the house when residence hall spaces were at a premium.

Catawba president Dr. David Nelson and his presidential spouse, Kimberly Nelson, reside in the home, which is currently designed with the first floor as public space for the College, used for meetings, gatherings, receptions and dinners. An impressive stairwell carries you to the second floor, and detailed Goodman trim can be found throughout the house. Several artifacts and works of art, some from the Catawba collection and some from the Nelson's private collection are featured in the home. The second and third floors house private living space, office and study space, and the Nelson's library, comprised of some three-thousand volumes.

Parking options: Onwake-Dearborn Chapel, 230 Faculty-Staff Circle;
Hoke Hall lot, 143 N Park Dr; N Park Drive street parking



Forest Village
ON THE GREENWAY



**COURTYARD
ON MAIN**





SPONSORSHIPS

OctoberTour could not happen without the generosity of our sponsors. Thank you for helping us continue the legacy of OctoberTour for decades to come.

INDIVIDUAL SPONSORS

PRESENTING

Fred & Alice Stanback

FEDERAL

Gordon Hurley

VICTORIAN

Seamus & Traci Donaldson

CRAFTSMAN

Greg & Missie Alcorn

Sue Fisher

Bud & Betty Mickle

Jim & Fan Moberg

Edward & Susan Norvell

Gavine, Andrew & Theresa Pitner

Wyndham Robertson

Martha Smith

Cliff & Barb Sorel

Robert & Susan Whitaker

COLONIAL

Miles Abernethy

Stewart & Noel Adams

Across the Pond Bed & Breakfast

Amy Almond, Howard Hanna Allen Tate

Mark Amalfitano & Sara Clymer

Steve & Sherry Beck

Brown & Fortner Dental Group

Marshall & Joan Beard

Tommy & Mimi Carlton

Suzanne Wallace Casey

Edward & Nancy Clement

Tripp & Katherine Clement

Raymond & Kay Coltrain

Bob & Sara Cook

Darryl & Barbara Corriher

Mark & Jackie Curran

Brian & Annette Delaney

Mark & Allison Doby

Steve & Lina Drinkard

Don & Bethany Fortner

Myron & Mary Goodman

Will & Amy Goodnight

Greystone Salon

Kevin & Laurel Harry

Kathi Hill

Diane Hooper

Michael & Cecelia Hughes

Dennis & Kathy Ingold

Steve & Celia Jarrett

Chace & Jacquelyn Jensen

Danny & Laura Jensen

Chris & Anne Jones

Jason & Diana Keith

Bill & Susan Kluttz

Frank Labagnara & David Garling

Debbie Lucas

John & Susan Muth

Owen & Elizabeth Norvell

Fred & Adrien Norton

O.O. Rufty Climate Control Storage

Jason & Monique Owens

Tim & Trisha Proper

Katelin Rice

Salisbury Motor Company

Sharon Beck Wellness

Tamara Sheffield

Bob & Caren Steele

Top Hat Contractors

Jonathan & Lane Wallace

Whitney Wallace

WDAV 89.9

CORPORATE SPONSORS



JADE



Carrol Fisher Construction Co.



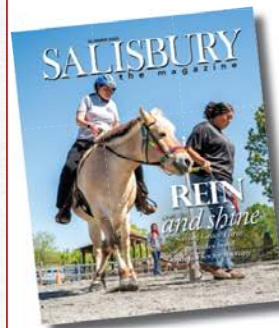
OPAL



WYMBS LAW

DO NOT MISS OUT ON YOUR FAVORITE MAGAZINE.

Subscribe using the form at SalisburyTheMagazine.com, calling 704-797-POST or mailing in the form below



**9 ISSUES OF
SALISBURY
THE MAGAZINE
FOR ONLY
\$18⁺TAX**

Mail to:
SALISBURY
the magazine
PO BOX 4639
Salisbury, NC 28145

**Subscribe
& Save!**

NOTE: New subscriptions will begin 4-8 weeks after receiving your request depending on magazine schedule.

☐ **YES! Send me 9 Issues of SALISBURY the magazine for only \$18**

Name _____

Street Address _____

City _____ State _____ Zip _____

Email Address _____

☐ Bill Me ☐ Payment Enclosed

Price includes NC tax and shipping.

☐ **YES! Gift 9 Issues of SALISBURY the magazine for only \$18**

TO:

FROM:

Name _____

Name _____

Address _____

Address _____

Address continued _____

City/State/Zip _____

City/State/Zip _____

Email _____

☐ Bill Me ☐ Payment Enclosed



First National Bank

PLEIN AIR ARTISTS & BELL TOWER GREEN MUSICIANS

A special thanks to the Plein Air Artists and Musicians who dedicate their time and talents to making this year's October Tour our best yet!

Plein Air Artists

Ray Richardson • Phyllis Steimel • Mary-Louise Hooper
Susan Bartlett • Cherrathée Hager • Deborah Fredette
Sarah White-Harvey • Karen Brown • Celia Jarrett

Bell Tower Green Musicians

Darlin' Dogwoods • Patty M • CJ & The Sunshine Band
James Gobble • Alex Day and Elementary School Jam
Zch Woodie • Dessy Atwell • Crow with No Mouth
Salisbury Youth Symphony • Sue McHugh



SELF-SERVE FLOWER STAND
WEDDING & EVENT FLOWERS
WORKSHOPS
PICK-YOUR OWN

*Located in the Historic Village
of Gold Hill, NC*



SCAN QR CODE OR VISIT
GOLDHILLFLOWERCO.COM FOR MORE INFO



Cheryl Gunter
Real Estate Agent
of CENTURY 21 Towne & Country

Salisbury, NC
Office: (704) 637-7721
www.century21.com

5 out of 5
★★★★★ (5) 22 Ratings





OUR MISSION

*To preserve, protect and revitalize
the historic fabric of Salisbury and
Rowan County.*

CALENDAR OF EVENTS 2025 - 2026

Since 1972

HALLS OF POE

October 28 & 29, 2025

Jonathan Coarey Wallace presents readings from Poe in this haunted evening with limited seating at the Hall House (ages 14+). Includes cocktails and refreshments. Limited seating. **Ticketed event.**

SECOND SATURDAY OF EVERY MONTH

Find treasure amongst the salvaged goods in the Ice House at Second Saturday Salvage from 9AM - 2PM every second Saturday located at 224 E Horah Street, Salisbury. HSF members enjoy a 10% discount.

HISTORIC HALL HOUSE TOURS

Visit the Hall House, circa 1820, for docent guided tours at 226 S Jackson Street, Salisbury from 1PM - 4PM every Saturday (closed to tours during OctoberTour, Dec. 14, and through the months of January & February). No reservations required. **\$5 Admission. Free for Members.**

HOLIDAY OPEN HOUSE AT HALL HOUSE

December 3, 2025

No Christmas season in Salisbury is complete without experiencing the Historic Hall House all decked out by numerous talented decorators. Be sure and get a photo by the gorgeous tree in the parlor while you enjoy holiday refreshments. **Free event - donations appreciated.**

HOLIDAY TEA AT THE HALL HOUSE

December 13, 2025

Join us for a Hall House holiday tradition in our beautiful house museum decorated for Christmas. Catered by the famous Historic Sharpe House team from Statesville! Limited seating. **Ticketed event.**

A CHRISTMAS CAROL

December 19 & 20, 2025

Jonathan Coarey Wallace delights audiences in the intimate setting of the Hall House for all ages as he retells the story of Ebenezer Scrooge. Limited seating. **Ticketed event.**

HALL HOUSE HOP

March 28, 2026

Celebrate Easter on the lawn of the Hall House. Bunny petting zoo, games, refreshments, and family fun. **Free event.**

HSF ANNUAL MEETING

April 9, 2026

Report on the state of the organization, installment of officers and board members, and a special speaker. All HSF members and those interested in becoming a member are invited! Refreshments provided. **Free event.**

HISTORY ON TAP SERIES

June 25, July 23, & August 27, 2026

Cool off with craft beer from New Sarum Brewing and explore local history and beautiful architecture at our 3-part summer series. Live music adds to the fun as we feature a different historic preservation in progress each month. **Free event - donations appreciated.**

BANDS ON BANK STREET

September 6, 2026

Enjoy a relaxing Sunday evening listening to live bands on the lawn of the Hall House. Free hot dogs and drinks at this fun family experience. **Free event - donations appreciated.**

PATRONS' PARTY

October 9, 2026

Join us for an unforgettable evening at the 51st Annual OctoberTour Patrons' Party. With live entertainment, cocktails, and a few other surprises along the way, it's the perfect way to kick off the OctoberTour weekend! **Ticketed event.**

OCTOBERTOUR

October 10 & 11, 2026

Mark your calendars for next year's 51st annual historic home tour. We can't wait to see you there for another great tour of historic properties. **Ticketed event.**

MEMBERSHIP INFORMATION

Become a Member

Join Historic Salisbury Foundation and support our efforts to preserve, protect, and revitalize Salisbury and Rowan County.

Benefits Include

- Discounted OctoberTour tickets
- Free admission to the historic Hall House Museum
- Subscription to our quarterly newsletter
- Discounts at the Architectural Salvage Warehouse
- 40% off at Sherwin Williams Paint stores nationwide
- Mantels & More Members Only event at the Architectural Salvage Warehouse - Free Items
- Clement Preservation Society members receive invitations to special events throughout the year.

Membership Levels

Individual \$50

Family \$75

Sustaining \$100

Patron \$250

Benefactor \$500

Clement Preservation Society ... \$1,000

• Become a Member!

Visit the membership booth located at the corner of the Bell Tower Green under the garden trellis during OctoberTour hours or scan the QR code to join online!



For details go to historicsalisbury.org or call 704.636.0103

Historic Salisbury Foundation, Inc. is a private, non-profit 501(c)(3) preservation organization. Donations are tax-deductible to the extent of the law.

FULFILLING OUR MISSION

What does Historic Salisbury Foundation do?

For 53 years, Historic Salisbury Foundation has played an active role in preserving, protecting, and revitalizing the historic fabric of Salisbury and Rowan County. *But what does that mean?* The primary means the Foundation uses in our preservation work is called the **Revolving Fund**. HSF's Revolving Fund is a tool that allows the organization to purchase endangered historic properties, stabilize them, and sell to people who will finish the restoration work. A vital part of the process is placing **protective covenants** on our properties at the time of the sale. Historic Salisbury Foundation's covenants are held in perpetuity and allow the Foundation to ensure historic integrity is intact for decades to come. Protective covenants are not just for houses we own though - we can put in place a **historic preservation agreement** for your property, too! Learn more about our mission and the Revolving Fund by visiting historicsalisbury.org/revolvingfund/.



BEFORE



AFTER

Fulton-Mock-Blackmer House • c. 1820

How can I get Involved?

VOLUNTEER - We have numerous volunteer opportunities throughout the year! Join our Workday Wednesday crew to help salvage items from houses that are beyond saving, work on projects at our Revolving Fund houses, and more! We also need hundreds of volunteers to make OctoberTour, History on Tap, weekly Hall House tours, and other events happen.

ATTEND EVENTS: Tickets purchased and donations given provide funding for our operations and to maintain properties that are an integral part of the organization. We are a private non-profit 501(c)(3) and do not receive funding from the city, county, or state. We rely on grants and the generosity of our supporters.

BECOME A MEMBER: We would not be who we are without our members. Membership allows us to be effective in fulfilling our mission and expand our impact. There are numerous benefits to becoming a member, including a 40% discount at Sherwin Williams.

SHOP SALVAGE: Historic Salisbury Foundation owns and operates an architectural salvage warehouse called the Ice House where you can find all kinds of treasures! Rummage through old doors, windows, molding, sinks, bathtubs, mantels, and more. The Ice House is open every second Saturday of the month from 9am-2pm or by appointment, and is located at 224 E. Horah Street, Salisbury.

To learn more about Historic Salisbury Foundation and how you can support our mission, please visit historicsalisbury.org/support or call 704.636.0103.

CENTURY 21



Cathy Griffin
Broker
of CENTURY 21 Towne & Country

Office: 704-637-7721

Cell: 704-213-2464

www.cathygriffinhomes.com



5 out of 5

★★★★★ (5) 201 Ratings

Find a Home to Suit Your Lifestyle

www.century21.com



**Richard Hampton
Jenrette Foundation**

Advancing education,
innovation, and stewardship
in the fields of historic
preservation, decorative arts,
and historic landscapes.

Jenrette.org

SAVE THE DATE

*Historic Salisbury Foundation
presents our*

5^{1st} Annual **OCTOBER TOUR**

HISTORIC SALISBURY FOUNDATION

PATRONS' PARTY
OCTOBER 9, 2026

HISTORIC HOME TOURS
OCTOBER 10 & 11, 2026

